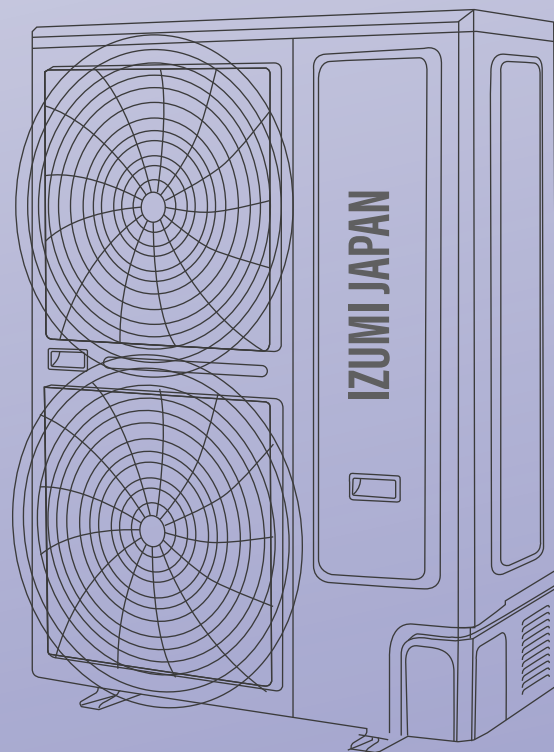
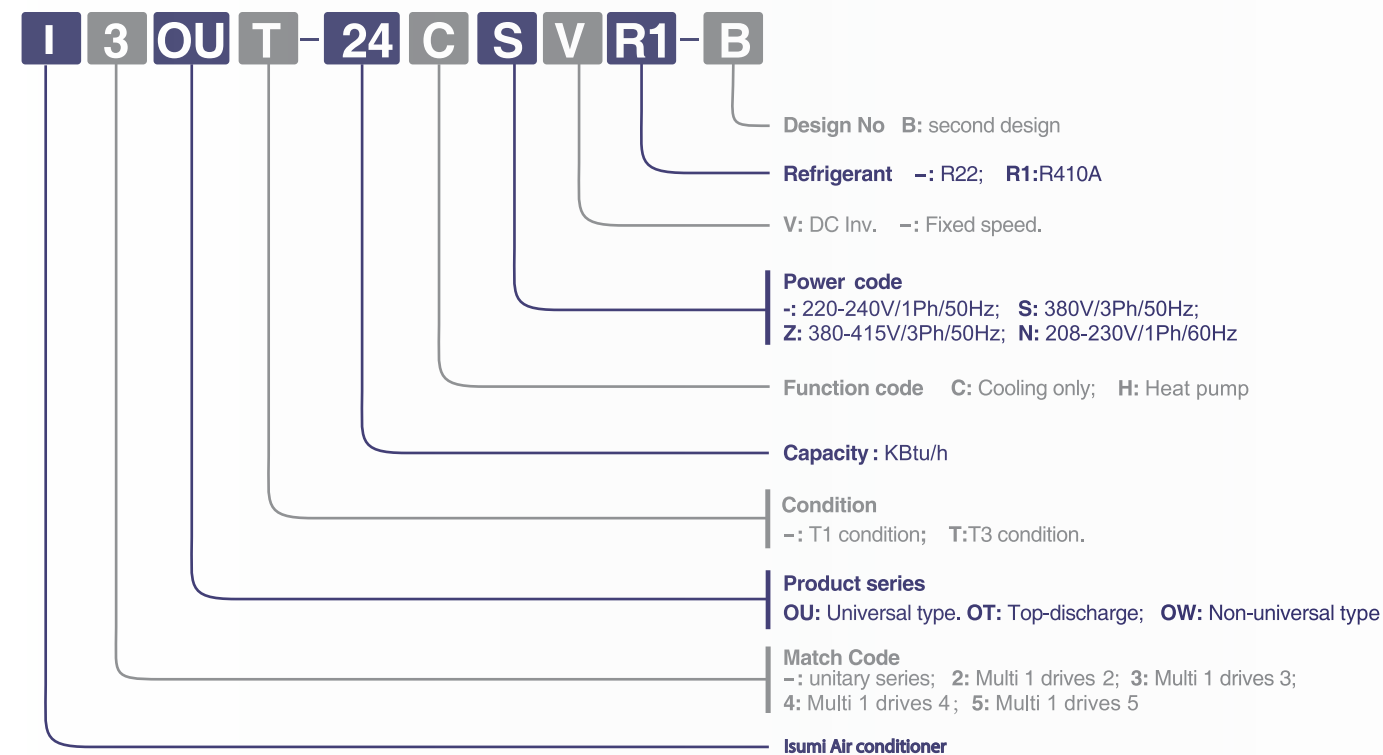
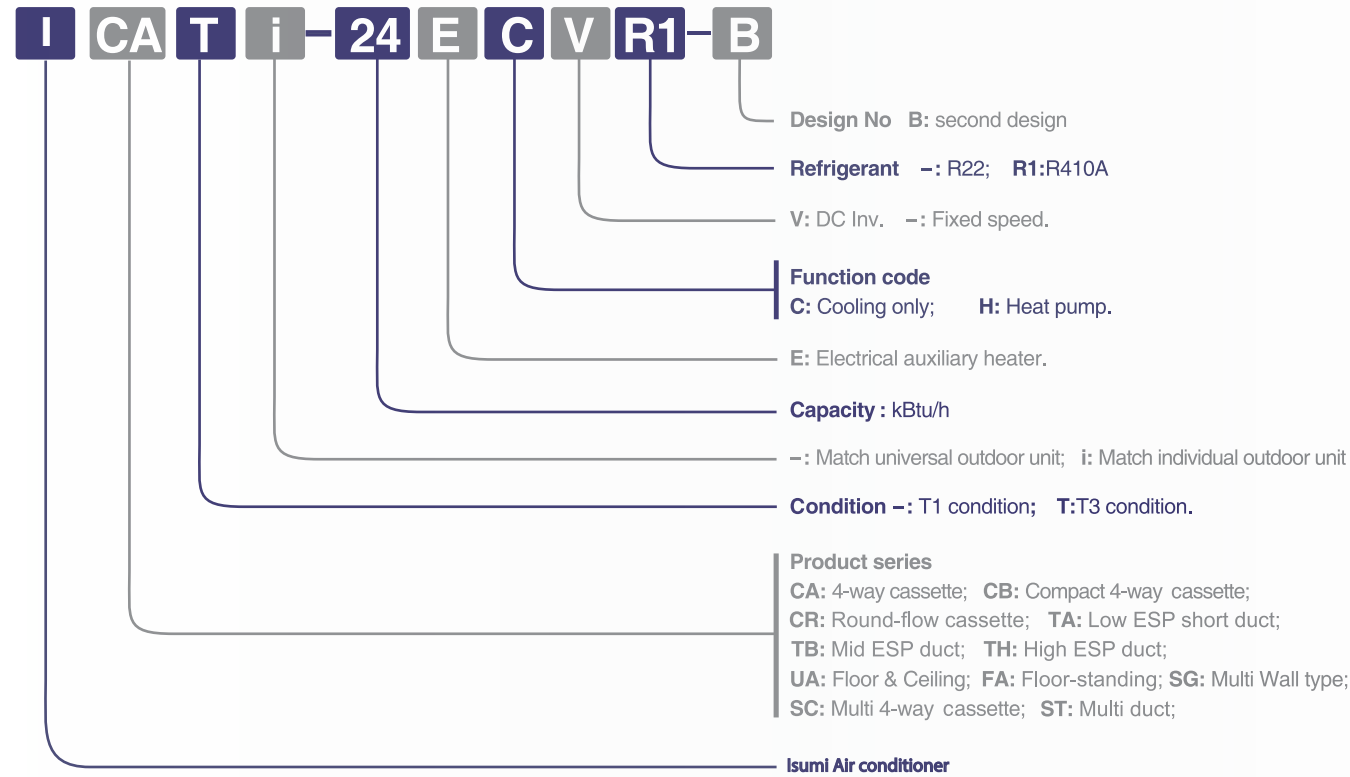


**50Hz  
LIGHT COMMERCIALS  
AIR CONDITIONERS**



# How to Read the models



## ON/OFF Light Commercial Universal Outdoor Unit



9K/12K/18K Btu/h      24K Btu/h      36K Btu/h      48K/60K Btu/h

### Features

- World famous scroll compressor, quick reactivity and stable operation. Anti-attenuation design, better low-temperature heating performance.
  - Fixed Scroll
    - Active Scroll
    - Compressing Area
- Multi-direction piping connection meets different requirement, convenient installation.
  -
- Inner-grooved tube, enhance the heat exchanger efficiency. Multi protection like high pressure protection, high temperature protection, etc.
  -
- Low ambient kit for optional, operating temperature can be down to -15°C in cooling mode.
- For 24 60K Btu/h, using RS484 communication, 2/3 core shield wire, easy and convenient to connect the wire.
  -
- For 36-60K Btu/h cooling only type, Panasonic compressor is standard, and Highly compressor is for optional.
  - Panasonic HIGHLY**

# Specification

## R410A Heat Pump

Outdoor unit		IOU-12HR1	IOU-18HR1	IOU-24HR1	IOU-24HR1	IOU-36HSR1	IOU-48HSR1	IOU-60HSR1	
Power supply		220~240/1/50	220~240/1/50	220~240/1/50	220~240/1/50	220~240/1/50	220~240/1/50	220~240/1/50	
<b>Capacity</b>									
Cooling	Capacity	Btu/h	12000	18000	24000	36000	48000	60000	
		KW	3.5	5.3	7.1	10.5	10.5	14	16
	Input	W	1240	1900	2400	3710	3800	5000	5700
	Rated current	A	5.4	8.26	10.6	16.7	6.9	8.2	10
Heating	Capacity	Btu/h	13200	20000	26000	39000	39000	52000	60000
		KW	3.9	5.9	7.7	11.5	11.5	15.2	16
	Input	W	1270	1690	2100	3310	3600	5100	5800
	Rated current	A	5.5	7.35	9.2	15	6.5	8.4	10.2
<b>Physical data</b>									
Max. input consumption	W	1620	2500	2700	4800	4900	6000	6600	
Max. current	A	8.3	12.6	13.2	21.2	10.3	10.5	11.8	
Starting current	A	27	40	49	112	48	66	70	
Compressor	Type	Rotary	Rotary	Rotary	Scroll/Rotary	Scroll/Rotary	Scroll/Rotary	Scroll/Rotary	
	Brand	GMCC	Highly	Highly	Panasonic	Panasonic	Panasonic	Panasonic	
Outdoor air flow	m <sup>3</sup> /h	2000	2800	3800	6000	6000	6100	6100	
Outdoor noise level	dB(A)	55	53	58	65	65	60	60	
Dimension(WxHxD)	mm	866x535x304	866x535x304	930x700x370	1070x995x400	1070x995x400	911x1335x400	911x1335x400	
Packing dimension(WxHxD)	mm	920x585x335	920x585x335	990x770x410	1145x1120x475	1145x1120x475	964x1445x402	964x1445x402	
Net/Gross weight	kg	36/38	41/43	52/56	92/100	92/100	99/110	99/110	
Refrigerant type/Quantity	g	R410A/1100	R410A/1200	R410A/1800	R410A/2100	R410A/2100	R410A/3600	R410A/4000	
Design pressure	MPa	4.0/1.2	4.0/1.2	4.0/1.2	4.0/1.2	4.0/1.2	4.0/1.2	4.0/1.2	
<b>Piping data</b>									
Liquid side/Gas side	mm	Φ6.35/Φ12.7	Φ6.35/Φ12.7	Φ9.52/Φ15.88	Φ9.52/Φ19.05	Φ9.52/Φ19.05	Φ9.52/Φ19.05	Φ9.52/Φ19.05	
Max. pipe length	m	15	25	25	30	30	50	50	
Max. high drop	m	8	15	15	20	20	30	30	

## R410A Cooling Only

Outdoor unit		IOU-18CR1	IOU-24CR1	IOU-30CR1	IOU-36CR1	IOU-48CR1	IOU-60CR1	
Power supply		220~240/1/50	220~240/1/50	220~240/1/50	380~415/3/50	380~415/3/50	380~415/3/50	
<b>Capacity</b>								
Cooling	Capacity	Btu/h	18000	24000	36000	36000	48000	60000
		KW	5.3	7.1	10.5	10.5	14	16
	Input	W	1900	2400	3710	3800	5000	5700
	Rated current	A	8.26	10.6	16.7	6.9	8.2	10
<b>Physical data</b>								
Max. input consumption	W	2500	2700	4800	4900	6000	6600	
Max. current	A	11.36	13.2	21.2	10.3	10.5	11.8	
Starting current	A	40	49	112	48	66	70	
Compressor	Type	Rotary	Rotary	Scroll/Rotary	Scroll/Rotary	Scroll/Rotary	Scroll/Rotary	
	Brand	Highly	Highly	Panasonic/Highly	Panasonic/Highly	Panasonic/Highly	Panasonic/Highly	
Outdoor air flow	m <sup>3</sup> /h	2800	3800	6000	6000	6100	6100	
Outdoor noise level	dB(A)	53	58	65	65	60	60	
Dimension(WxHxD)	mm	866x535x304	930x700x370	1070x995x400	1070x995x400	911x1335x400	911x1335x400	
Packing dimension(WxHxD)	mm	920x585x335	990x770x410	1145x1120x475	1145x1120x475	964x1445x402	964x1445x402	
Net/Gross weight	kg	39/41	58/61	92/100	92/100	88/99	88/99	
Refrigerant type/Quantity	g	R410A/1250	R410A/1800	R410A/2100	R410A/2100	R410A/3600	R410A/3600	
Design pressure	MPa	4.0/1.2	4.0/1.2	4.0/1.2	4.0/1.2	4.0/1.2	4.0/1.2	
<b>Piping data</b>								
Liquid side/Gas side	mm	Φ6.35/Φ12.7	Φ9.52/Φ15.88	Φ9.52/Φ19.05	Φ9.52/Φ19.05	Φ9.52/Φ19.05	Φ9.52/Φ19.05	
Max. pipe length	m	25	25	30	30	50	50	
Max. high drop	m	15	15	20	20	30	30	

## R22 Heat Pump

Outdoor unit		IOU-9H	IOU-12H	IOU-18H	IOU-24H	IOU-30H	IOU-36H	IOU-36HS	IOU-48H	IOU-48HS	IOU-60H	
Power supply		V/Ph/Hz	220~240/1/50	220~240/1/50	220~240/1/50	220~240/1/50	220~240/1/50	220~240/1/50	380~415/3/50	380~415/3/50	380~415/3/50	
<b>Capacity</b>												
Cooling	Capacity	Btu/h	9000	12000	18000	24000	30000	36000	36000	48000	48000	60000
		KW	2.6	3.5	5.3	7.1	8.8	10.5	10.5	14	14	16
	Input	W	990	1320	1780	2330	3150	3980	3800	5230	5230	5700
	Rated current	A	4.5	6.1	8.1	10.9	15	18.2	6.8	9.5	9.5	10
Heating	Capacity	Btu/h	10000	13000	20000	26000	32000	40000	40000	52000	52000	60000
		KW	2.9	3.8	5.8	7.8	9.3	11.5	11.5	15.4	15.4	16.6
	Input	W	920	1220	1630	2140	2950	3750	3680	5130	5130	5800
	Rated current	A	4.1	5.6	7.5	10.2	14	17.2	6.6	9.3	9.3	10.2
<b>Physical data</b>												
Max. input consumption	W	1150	1620	2300	3260	4400	5370	5130	7320	7320	7600	
Max. current	A	5.9	8.3	11.6	14.8	22	24.6	9.2	13.2	13.2	13.5	
Starting current	A	16	27	38	64.7	66	112	48	55	55	73	
Compressor	Type	Rotary	Rotary	Rotary	Rotary	Rotary	Scroll	Scroll/Twin-Rotary	Scroll	Scroll/Twin-Rotary	Scroll/Twin-Rotary	
	Brand	Mitsubishi	Mitsubishi	Mitsubishi	Gmcc	Mitsubishi	Panasonic	Panasonic/Highly	Panasonic	Panasonic/Highly	Panasonic/Highly	
Outdoor air flow	m <sup>3</sup> /h	2000	2000	2800	3800	4200	5600	5600	5600	6100	6100	
Outdoor noise level	dB(A)	50	50	53	55	58	60	60	60	60	60	
Dimension(WxHxD)	mm	735x505x286	880x540x305	880x540x305	925x700x366	960x840x390	1050x995x400	1050x995x400	1050x995x400	911x1330x400	911x1330x400	
Packing dimension(WxHxD)	mm	825x550x320	920x585x335	920x585x335	990x770x410	1030x435x950	1145x1120x475	1145x1120x475	1145x1120x475	964x1445x402	964x1445x402	
Net/Gross weight	kg	28/30	35/33	49/51	55/60	63/73	92/100	92/100	98/106	96/107	99/110	
Refrigerant quantity	g	800	1000	1520	1900	2650	2500	2500	3000	3000	3300	
Design pressure	MPa	2.7/0.7	2.7/0.7	2.7/0.7	2.7/0.7	2.7/0.7	2.7/0.7	2.7/0.7	2.7/0.7	2.7/0.7	2.7/0.7	
<b>Piping data</b>												
Liquid side/Gas side	mm	Φ6.35/Φ9.52	Φ6.35/Φ12.7	Φ6.35/Φ12.7	Φ9.52/Φ15.88	Φ9.52/Φ15.88	Φ9.52/Φ19.05	Φ9.52/Φ19.05	Φ9.52/Φ19.05	Φ9.52/Φ19.05	Φ9.52/Φ19.05	
Max. pipe length	m	15	15	25	25	25	30	30	50	50	50	
Max. high drop	m	8	8	15	15	15	20	20	30	30	30	

## R22 Cooling Only

Outdoor unit		IOU-9C	IOU-12C	IOU-18C	IOU-24C	IOU-30C	IOU-36C	IOU-36CS	IOU-48CA	IOU-48CS	IOU-60CS	
Power supply		V/Ph/Hz	220~240/1/50	220~240/1/50	220~240/1/50	220~240/1/50	220~240/1/50	220~240/1/50	380~415/3/50	380~415/3/50	380~415/3/50	
<b>Capacity</b>												
Cooling	Capacity	Btu/h	9000	12000	18000	24000	30000	36000	36000	48000	48000	60000
		KW	2.6	3.5	5.3	7.1	8.8	10.5	10.5	14	14	16
	Input	W	990	1320	1780	2330	3150	3980	3800	5230	5230	5700
	Rated current	A	4.5	6.1	8.1	10.9	15	18.2	6.8	9.5	9.5	10
<b>Physical data</b>												
Max. input consumption	W	1150	1620	2300	3260	4400	5370	5130	7320	7320	7600	
Max. current	A	5.9	8.3	11.6	14.8	22	24.6	9.2	13.2	13.2	13.5	
Starting current	A	16	27	38	64.7	66	112	48	55	55	73	
Compressor	Type	Rotary	Rotary	Rotary	Rotary	Rotary	Scroll	Scroll/Twin-Rotary	Scroll	Scroll/Twin-Rotary	Scroll/Twin-Rotary	
	Brand	Mitsubishi	Mitsubishi	Mitsubishi	Gmcc	Mitsubishi	Panasonic	Panasonic/Highly	Panasonic	Panasonic/Highly	Panasonic/Highly	
Outdoor air flow	m <sup>3</sup> /h	2000	2000	2800	3800	4200	5600	5600	5600	6100	6100	
Outdoor noise level	dB(A)	50	50	53	55	58	60	60	60	60	60	
Dimension(WxHxD)	mm	735x505x286	880x540x305	880x540x305	925x700x366	960x840x390	1050x995x400	1050x995x400	1050x995x400	911x1330x400	911x1330x400	
Packing dimension(WxHxD)	mm	825x550x320	920x585x335	920x585x335	990x770x410	1030x435x950	1145x1120x475	1145x1120x475	1145x1120x475	964x1445x402	964x1445x402	
Net/Gross weight	kg	26/28	32/34	36/38	54/59	59/70	92/100	92/100	92/100	90/94	96/107	
Refrigerant quantity	g	550	680	1000	1100	1700	2200	2200	2050	2500	3000	
Design pressure	MPa	2.7/0.7	2.7/0.7	2.7/0.7	2.7/0.7	2.7/0.7	2.7/0.7	2.7/0.7	2.7/0.7	2.7/0.7	2.7/0.7	
<b>Piping data</b>												
Liquid side/Gas side	mm	Φ6.35/Φ9.52	Φ6.35/Φ12.7	Φ6.35/Φ12.7	Φ9.52/Φ15.88	Φ9.52/Φ15.88	Φ9.52/Φ19.05	Φ9.52/Φ19.05	Φ9.52/Φ19.05	Φ9.52/Φ19.05	Φ9.52/Φ19.05	
Max. pipe length	m	15	15	25	25	25	30	30	50	50	50	
Max. high drop	m	8	8	15	15	15	20	20	30	30	30	



# 4-way Cassette (Compact) Unit



12K/18K Btu/h

Controller			
Standard	Optional		
Wireless	Wireless		Wired

## Features

1 Compact type, ultra-thin body design, the min. height is only 275mm, save installation space.



650\*650mm

Compact Panel

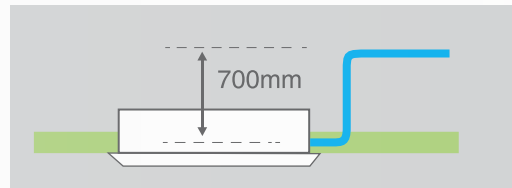


3 Streamlined design and 3D spiral fan blade, reduces air resistance and operation noise.

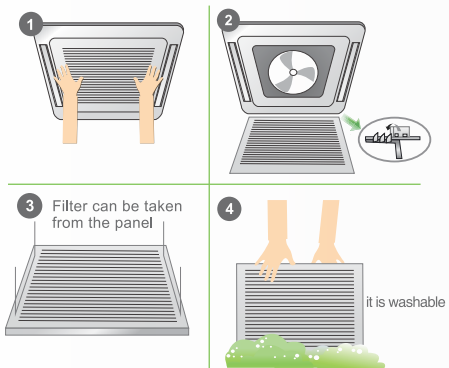


Three-dimensional spiral fan blade  
diffuser

4 Built-in water pump, pump head up to 700mm.



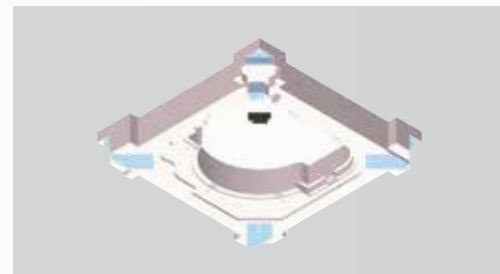
2 Washable filter, convenient to install and maintain.



3 Filter can be taken from the panel

4 it is washable

5 Foam water tray coated with special plastic, convenient to install, preventing the leakage of condensed water effectively.



## Specification

### R410A Heat Pump

Indoor unit		ICB-12HR1	ICB-24HR1
Power supply		220~240/1/50	220~240/1/50
Capacity			
Cooling	Capacity	Btu/h	12000
		KW	3.5
	Input	W	75
	Rated current	A	0.4
	EER	W/W	2.66
Heating	Capacity	Btu/h	13200
		KW	3.9
	Input	W	75
	Rated current	A	0.4
	COP	W/W	2.88
Physical data			
Indoor air flow(Hi/Med/Lo)	m <sup>3</sup> /h	590/480/350	750/620/510
Indoor noise level(Hi/Med/Lo)	dB(A)	40/35/32	48/43/34
Dimension(W×H×D)	Body(mm)	580x275x580	580x260x580
	Panel(mm)	650x30x650	650x30x650
Packing dimension(W×H×D)	Body(mm)	745x375x675	745x375x675
	Panel(mm)	750x95x750	750x95x750
Net/Gross weight	Body(Kg)	16.2/22	16.5/22
	Panel(Kg)	2.7/4.0	2.7/4.0
Refrigerant type		R410A	R410A
Piping data			
Liquid side/Gas side	mm	Φ6.35/Φ12.7	Φ6.35/Φ12.7
Drainage pipe	mm	DN25	DN25
Application area	m <sup>2</sup>	15~25	20~35
Stuffing quantity(Set)	40'HQ	150	150

### R22 Heat Pump

Indoor unit		ICB-12H	ICB-18H
Power supply		V/Ph/Hz	220~240/1/50
220~240/1/50			
Capacity			
Cooling	Capacity	Btu/h	12000
		KW	3.5
	Input	W	60
	Rated current	A	0.3
	EER	W/W	2.54
Heating	Capacity	Btu/h	13000
		KW	3.8
	Input	W	60
	Rated current	A	0.3
	COP	W/W	3.01
Physical data			
Indoor air flow(Hi/Med/Lo)	m <sup>3</sup> /h	600/510/450	750/620/510
Indoor noise level(Hi/Med/Lo)	dB(A)	40/35/32	48/43/34
Dimension(W×H×D)	Body(mm)	580x260x580	580x260x580
	Panel(mm)	650x30x650	650x30x650
Packing dimension(W×H×D)	Body(mm)	745x375x675	745x375x675
	Panel(mm)	750x95x750	750x95x750
Net/Gross weight	Body (Kg)	16.5/22	16.5/22
	Panel (Kg)	2.7/4.0	2.7/4.0
Refrigerant type		R22	R22
Piping data			
Liquid side/Gas side	mm	Φ6.35/Φ12.7	Φ6.35/Φ12.7
Drainage pipe	mm	DN25	DN25
Application area	m <sup>2</sup>	15~25	20~35
Stuffing quantity(Set)	40'HQ	150	150

### R410A Cooling Only

Indoor unit		ICB-18CR1
Power supply		V/Ph/Hz
220~240/1/50		
Capacity		
Cooling	Capacity	Btu/h
		KW
	Input	W
	Rated current	A
	EER	W/W
Physical data		
Indoor air flow(Hi/Med/Lo)	m <sup>3</sup> /h	750/620/510
Indoor noise level(Hi/Med/Lo)	dB(A)	48/43/34
Dimension(W×H×D)	Body(mm)	580x260x580
	Panel(mm)	650x30x650
Packing dimension(W×H×D)	Body(mm)	745x375x675
	Panel(mm)	750x95x750
Net/Gross weight	Body(Kg)	16.5/22
	Panel(Kg)	2.7/4.0
Refrigerant type		R410A
Piping data		
Liquid side/Gas side	mm	Φ6.35/Φ12.7
Drainage pipe	mm	DN25
Application area	m <sup>2</sup>	20~35
Stuffing quantity(Set)	40'HQ	150

### R22 Cooling Only

Indoor unit		ICB-12C	ICB-18C
Power supply		V/Ph/Hz	220~240/1/50
220~240/1/50			
Capacity			
Cooling	Capacity	Btu/h	12000
		KW	3.5
	Input	W	60
	Rated current	A	0.3
	EER	W/W	2.54
Physical data			
Indoor air flow(Hi/Med/Lo)	m <sup>3</sup> /h	600/510/450	750/620/510
Indoor noise level(Hi/Med/Lo)	dB(A)	40/35/32	48/43/34
Dimension(W×H×D)	Body(mm)	580x260x580	580x260x580
	Panel(mm)	650x30x650	650x30x650
Packing dimension(W×H×D)	Body(mm)	745x375x675	745x375x675
	Panel(mm)	750x95x750	750x95x750
Net/Gross weight	Body (Kg)	16.5/22	16.5/22
	Panel (Kg)	2.7/4.0	2.7/4.0
Refrigerant type		R22	R22
Piping data			
Liquid side/Gas side	mm	Φ6.35/Φ12.7	Φ6.35/Φ12.7
Drainage pipe	mm	DN25	DN25
Application area	m <sup>2</sup>	15~25	20~35
Stuffing quantity(Set)	40'HQ	150	150



# 4-way Cassette Unit



18k~60k Btu/h

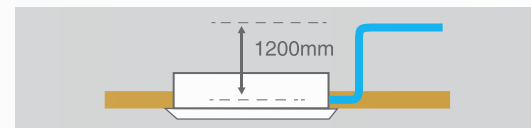
Controller		
Standard	Optional	
Wireless	Wireless	Wired

## Features

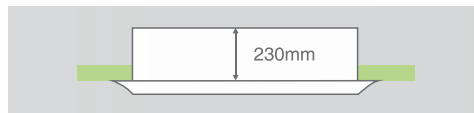
1 Digital tube display is optional.



2 Built-in water pump, pump head up to 1200mm.



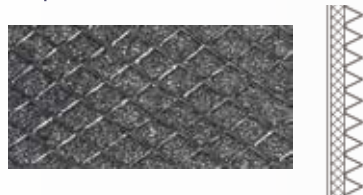
3 Ultra thin Body design, the min. height is only 230mm  
Save installation space



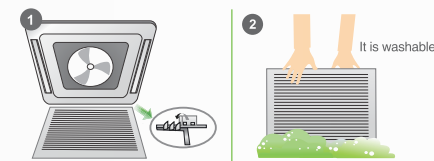
4 Streamlined design and 3D spiral fan blade, reduces air resistance and operation noise.



5 Cold catalyst filter for optional to absorb small particles to abjust Atmospheric Particulate Matter lower than PM2.5.



6 Easy and convenient installation and maintenance, washable filter design.



7 Four interfaces to connect with duct to another room. Fresh air intake, more healthy and comfortable.



## Specification

### R410A Heat Pump

Indoor unit		ICA-18HR1	ICA-24HR1	ICA-36HR1	ICA-48HR1	ICA-60HR1		
Power supply	V/Ph/Hz	220-240/1/50	220-240/1/50	220-240/1/50	220-240/1/50	220-240/1/50		
<b>Capacity</b>								
Cooling	Capacity	Btu/h	18000	24000	36000	48000	60000	
		KW	5.3	7.1	10.5	14	16	
	Input	W	65	150	160	180	180	
	Rated current	A	0.4	0.7	0.8	0.8	0.8	
Heating	EER	W/W	2.70	2.78	2.71	2.70	2.72	
		Capacity	Btu/h	20000	26000	39000	52000	60000
		KW	5.9	7.7	11.5	15.2	16.0	
Heating	Input	W	65	150	160	180	180	
		Rated current	A	0.4	0.7	0.8	0.8	0.8
Heating	COP	W/W	3.31	3.42	3.31	2.88	2.78	
		<b>Physical data</b>						
Indoor air flow(Hi/Med/Lo)	m <sup>3</sup> /h	810/720/640	1200/1020/840	1700/1500/1300	1900/1650/1400	1900/1650/1400		
Indoor noise level(Hi/Med/Lo)	dB(A)	45/41/38	48/46/44	48/46/44	52/48/45	52/48/45		
Dimension(W×H×D)	Body(mm)	840×230×840	840×230×840	840×285×840	840×285×840	840×285×840		
	Panel(mm)	950×50×950	950×50×950	950×50×950	950×50×950	950×50×950		
Packing dimension(W×H×D)	Body(mm)	920×265×920	920×265×920	920×310×920	920×310×920	920×310×920		
	Panel(mm)	1030×105×1030	1030×105×1030	1030×105×1030	1030×105×1030	1030×105×1030		
Net/Gross weight	Body(kg)	24/29	24/29	28/33.5	28/33.5	30.5/36		
	Panel(kg)	5.4/8.0	5.4/8.0	5.4/8.0	5.4/8.0	5.4/8.0		
Refrigerant type		R410A	R410A	R410A	R410A	R410A		
<b>Piping data</b>								
Liquid side/Gas side	mm	Φ6.35/Φ12.7	Φ9.52/Φ15.88	Φ9.52/Φ19.05	Φ9.52/Φ19.05	Φ9.52/Φ19.05		
Drainag pipe	mm	DN25	DN25	DN25	DN25	DN25		
Application area	m <sup>2</sup>	20-35	28-50	40-70	55~95	60~105		

### R410A Cooling Only

Indoor unit		ICA-18CR1	ICA-24CR1	ICA-36CR1	ICA-48CR1	ICA-60CR1		
Power supply	V/Ph/Hz	220-240/1/50	220-240/1/50	220-240/1/50	220-240/1/50	220-240/1/50		
<b>Capacity</b>								
Cooling	Capacity	Btu/h	18000	24000	36000	48000	60000	
		KW	5.3	7.1	10.5	14	16	
	Input	W	65	150	160	180	180	
	Rated current	A	0.4	0.7	0.8	0.8	0.8	
Heating	EER	W/W	2.70	2.78	2.71	2.70	2.72	
		Capacity	Btu/h	20000	26000	39000	52000	60000
		KW	5.9	7.7	11.5	15.2	16.0	
Heating	Input	W	65	150	160	180	180	
		Rated current	A	0.4	0.7	0.8	0.8	0.8
Heating	COP	W/W	3.31	3.42	3.31	2.88	2.78	
		<b>Physical data</b>						
Indoor air flow(Hi/Med/Lo)	m <sup>3</sup> /h	810/720/640	1200/1020/840	1700/1500/1300	1900/1650/1400	1900/1650/1400		
Indoor noise level(Hi/Med/Lo)	dB(A)	45/41/38	48/46/44	48/46/44	52/48/45	52/48/45		
Dimension(W×H×D)	Body(mm)	840×230×840	840×230×840	840×285×840	840×285×840	840×285×840		
	Panel(mm)	950×50×950	950×50×950	950×50×950	950×50×950	950×50×950		
Packing dimension(W×H×D)	Body(mm)	920×265×920	920×265×920	920×310×920	920×310×920	920×310×920		
	Panel(mm)	1030×105×1030	1030×105×1030	1030×105×1030	1030×105×1030	1030×105×1030		
Net/Gross weight	Body(kg)	24/29	24/29	28/33.5	28/33.5	30.5/36		
	Panel(kg)	5.4/8.0	5.4/8.0	5.4/8.0	5.4/8.0	5.4/8.0		
Refrigerant type		R410A	R410A	R410A	R410A	R410A		
<b>Piping data</b>								
Liquid side/Gas side	mm	Φ6.35/Φ12.7	Φ9.52/Φ15.88	Φ9.52/Φ19.05	Φ9.52/Φ19.05	Φ9.52/Φ19.05		
Drainag pipe	mm	DN25	DN25	DN25	DN25	DN25		
Application area	m <sup>2</sup>	20-35	28-50	40-70	55~95	60~105		
Stuffing quantity(Set)	40' HQ	90	90	60	60	60		

# Round-flow Cassette

## R22 Heat Pump

Indoor unit		ICA-18H	ICA-24H	ICA-30H	ICA-36H	ICA-48H	ICA-60H	
Power supply	V/Ph/Hz	220~240/1/50	220~240/1/50	220~240/1/50	220~240/1/50	220~240/1/50	220~240/1/50	
<b>Capacity</b>								
Cooling	Capacity	Btu/h	18000	24000	30000	36000	48000	60000
		KW	5.3	7.1	8.8	10.5	14	16
	Input	W	100	150	200	160	180	180
	Rated current	A	0.5	0.7	1	0.8	0.8	0.8
Heating	EER	W/W	2.82	2.86	2.62	2.65	2.60	2.72
	Capacity	Btu/h	20000	26000	32000	39000	52000	60000
		KW	5.8	7.8	9.3	11.5	15.4	16.6
	Input	W	100	150	200	160	180	180
Rated current	A	0.5	0.7	1	0.8	0.8	0.8	
COP	W/W	3.37	3.41	2.98	3.01	2.91	2.68	
<b>Physical data</b>								
Indoor air flow(Hi/Med/Lo)	m <sup>3</sup> /h	810/700/580	1200/1050/900	1350/1200/1050	1700/1500/1200	1900/1600/1300	1900/1600/1300	
Indoor noise level(Hi/Med/Lo)	dB(A)	48/45/43	48/46/44	48/46/44	48/46/44	52/48/45	52/48/45	
Dimension(W×H×D)	Body(mm)	840×230×840	840×230×840	840×285×840	840×285×840	840×285×840	840×285×840	
	Panel(mm)	950×50×950	950×50×950	950×50×950	950×50×950	950×50×950	950×50×950	
Packing dimension(W×H×D)	Body(mm)	920×265×920	920×265×920	920×265×920	920×310×920	920×310×920	920×310×920	
	Panel(mm)	1030×105×1030	1030×105×1030	1030×105×1030	1030×105×1030	1030×105×1030	1030×105×1030	
Net/Gross weight	Body(kg)	24/29	24/29	24/29	28/33.5	28/33.5	30.5/36	
	Panel(kg)	5.4/8.0	5.4/8.0	5.4/8.0	5.4/8.0	5.4/8.0	5.4/8.0	
Refrigerant type		R22	R22	R22	R22	R22	R22	
<b>Piping data</b>								
Liquid side/Gas side	mm	Φ6.35/Φ12.7	Φ9.52/Φ15.88	Φ9.52/Φ19.05	Φ9.52/Φ19.05	Φ9.52/Φ19.05	Φ9.52/Φ19.05	
Drainage pipe	mm	DN25	DN25	DN25	DN25	DN25	DN25	
Application area	m <sup>2</sup>	20~35	28~50	28~50	40~70	55~95	60~105	
Stuffing quantity(Set)	40' HQ	150	90	90	60	60	60	

## R22 Cooling Only

Indoor unit		ICA-18C	ICA-24C	ICA-30C	ICA-36C	ICA-48C	ICA-60C	
Power supply	V/Ph/Hz	220~240/1/50	220~240/1/50	220~240/1/50	220~240/1/50	220~240/1/50	220~240/1/50	
<b>Capacity</b>								
Cooling	Capacity	Btu/h	18000	24000	30000	36000	48000	60000
		KW	5.3	7.1	8.8	10.5	14	16
	Input	W	100	150	200	160	180	180
	Rated current	A	0.5	0.7	1	0.8	0.8	0.8
EER	W/W	2.82	2.86	2.62	2.65	2.59	2.72	
<b>Physical data</b>								
Indoor air flow(Hi/Med/Lo)	m <sup>3</sup> /h	810/700/580	1200/1050/900	1350/1200/1050	1700/1500/1200	1900/1600/1300	1900/1600/1300	
Indoor noise level(Hi/Med/Lo)	dB(A)	48/45/43	48/46/44	48/46/44	48/46/44	52/48/45	52/48/45	
Dimension(W×H×D)	Body(mm)	840×230×840	840×230×840	840×285×840	840×285×840	840×285×840	840×285×840	
	Panel(mm)	950×50×950	950×50×950	950×50×950	950×50×950	950×50×950	950×50×950	
Packing dimension(W×H×D)	Body(mm)	920×265×920	920×265×920	920×265×920	920×310×920	920×310×920	920×310×920	
	Panel(mm)	1030×105×1030	1030×105×1030	1030×105×1030	1030×105×1030	1030×105×1030	1030×105×1030	
Net/Gross weight	Body(kg)	24/29	24/29	24/29	28/33.5	28/33.5	30.5/36	
	Panel(kg)	5.4/8.0	5.4/8.0	5.4/8.0	5.4/8.0	5.4/8.0	5.4/8.0	
Refrigerant type		R22	R22	R22	R22	R22	R22	
<b>Piping data</b>								
Liquid side/Gas side	mm	Φ6.35/Φ12.7	Φ9.52/Φ15.88	Φ9.52/Φ19.05	Φ9.52/Φ19.05	Φ9.52/Φ19.05	Φ9.52/Φ19.05	
Drainage pipe	mm	DN25	DN25	DN25	DN25	DN25	DN25	
Application area	m <sup>2</sup>	20~35	28~50	28~50	40~70	55~95	60~105	
Stuffing quantity(Set)	40' HQ	90	90	90	60	60	60	



18K~60K Btu/h

Controller		
Standard	Optional	
Wireless	Wireless	Wired
		

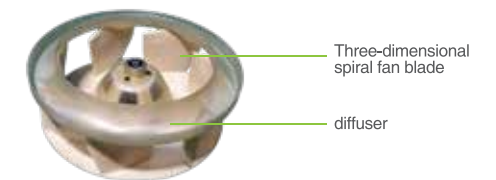
## Features

1 Round-flow cassette, 360 ° air flow, cold air can reaching each corner of the room, more comfortable.



Round flow cassette

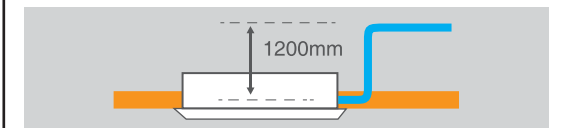
2 Streamlined design and 3D spiral fan blade, reduces air resistance and operation noise.



3 Digital tube display is optional.



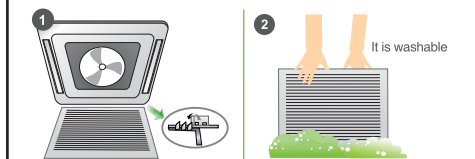
4 Built-in water pump, pump head up to 1200mm.



5 Cold catalyst filter for optional to absorb small particles to adjust Atmospheric Particulate Matter lower than PM2.5.



6 Easy and convenient installation and maintenance, washable filter design.



7 Four interfaces to connect with duct to another room. Fresh air intake, more healthy and comfortable.





# Specification

## R410A Heat Pump

Indoor unit		ICR-18HR1	ICR-24HR1	ICR-36HR1	ICR-48HR1	ICR-60HR1	
Power supply	V/Ph/Hz	220-240/1/50	220-240/1/50	220-240/1/50	220-240/1/50	220-240/1/50	
<b>Capacity</b>							
Cooling	Capacity	Btu/h	18000	24000	36000	48000	60000
		KW	5.3	7.1	10.5	14	16
	Input	W	65	150	160	180	180
	Rated current	A	0.4	0.7	0.8	0.8	0.8
	EER	W/W	2.70	2.78	2.71	2.70	2.72
Heating	Capacity	Btu/h	20000	26000	39000	52000	60000
		KW	5.9	7.7	11.5	15.2	16.0
	Input	W	65	150	160	180	180
	Rated current	A	0.4	0.7	0.8	0.8	0.8
COP	W/W	3.31	3.42	3.31	2.88	2.68	
<b>Physical data</b>							
Indoor air flow(Hi/Med/Lo)	m³/h	810/720/640	1200/1020/840	1700/1500/1300	1900/1650/1400	1900/1650/1400	
Indoor noise level(Hi/Med/Lo)	dB(A)	45/41/38	48/46/44	48/46/44	52/48/45	52/48/45	
Dimension(W×H×D)	Body(mm)	840×230×840	840×230×840	840×285×840	840×285×840	840×285×840	
	Panel(mm)	950X40X950	950X40X950	950X40X950	950X40X950	950X40X950	
Packing dimension(W×H×D)	Body(mm)	920×265×920	920×265×920	920×310×920	920×310×920	920×310×920	
	Panel(mm)	1030X100X1030	1030X100X1030	1030X100X1030	1030X100X1030	1030X100X1030	
Net/Gross weight	Body(kg)	24/29	24/29	28/33.5	28/33.5	30.5/36	
	Panel(kg)	6.5/9.5	6.5/9.5	6.5/9.5	6.5/9.5	6.5/9.5	
Refrigerant type		R410A	R410A	R410A	R410A	R410A	
<b>Piping data</b>							
Liquid side/Gas side	mm	Φ6.35/Φ12.7	Φ9.52/Φ15.88	Φ9.52/Φ19.05	Φ9.52/Φ19.05	Φ9.52/Φ19.05	
Drainag pipe	mm	DN25	DN25	DN25	DN25	DN25	
Application area	m²	20-35	28-50	40-70	55~95	60~105	

## R410A Cooling Only

Indoor unit		ICR-18CR1	ICR-24CR1	ICR-36CR1	ICR-48CR1	ICR-60CR1	
Power supply	V/Ph/Hz	220-240/1/50	220-240/1/50	220-240/1/50	220-240/1/50	220-240/1/50	
<b>Capacity</b>							
Cooling	Capacity	Btu/h	18000	24000	36000	48000	60000
		KW	5.3	7.1	10.5	14	16
	Input	W	65	150	160	180	180
	Rated current	A	0.4	0.7	0.8	0.8	0.8
	EER	W/W	2.70	2.78	2.71	2.70	2.72
<b>Physical data</b>							
Indoor air flow(Hi/Med/Lo)	m³/h	810/720/640	1200/1020/840	1700/1500/1300	1900/1650/1400	1900/1650/1400	
Indoor noise level(Hi/Med/Lo)	dB(A)	45/41/38	48/46/44	48/46/44	52/48/45	52/48/45	
Dimension(W×H×D)	Body(mm)	840×230×840	840×230×840	840×285×840	840×285×840	840×285×840	
	Panel(mm)	950X40X950	950X40X950	950X40X950	950X40X950	950X40X950	
Packing dimension(W×H×D)	Body(mm)	920×265×920	920×265×920	920×310×920	920×310×920	920×310×920	
	Panel(mm)	1030X100X1030	1030X100X1030	1030X100X1030	1030X100X1030	1030X100X1030	
Net/Gross weight	Body(kg)	24/29	24/29	28/33.5	28/33.5	30.5/36	
	Panel(kg)	6.5/9.5	6.5/9.5	6.5/9.5	6.5/9.5	6.5/9.5	
Refrigerant type		R410A	R410A	R410A	R410A	R410A	
<b>Piping data</b>							
Liquid side/Gas side	mm	Φ6.35/Φ12.7	Φ9.52/Φ15.88	Φ9.52/Φ19.05	Φ9.52/Φ19.05	Φ9.52/Φ19.05	
Drainag pipe	mm	DN25	DN25	DN25	DN25	DN25	
Application area	m²	20-35	28-50	40-70	55~95	60~105	
Stuffing quantity(Set)	40' HQ	90	90	60	60	60	

## R22 Heat Pump

Indoor unit		ICR-18H	ICR-24H	ICR-30H	ICR-36H	ICR-48H	ICR-60H	
Power supply	V/Ph/Hz	220~240/1/50	220~240/1/50	220~240/1/50	220~240/1/50	220~240/1/50	220~240/1/50	
<b>Capacity</b>								
Cooling	Capacity	Btu/h	18000	24000	30000	36000	48000	60000
		KW	5.3	7.1	8.8	10.5	14	16
	Input	W	100	150	200	160	180	180
	Rated current	A	0.5	0.7	1	0.8	0.8	0.8
	EER	W/W	2.82	2.86	2.62	2.65	2.60	2.72
Heating	Capacity	Btu/h	20000	26000	32000	39000	52000	60000
		KW	5.8	7.8	9.3	11.5	15.4	16
	Input	W	100	150	200	160	180	180
	Rated current	A	0.5	0.7	1	0.8	0.8	0.8
COP	W/W	3.37	3.41	2.95	3.01	2.91	2.68	
<b>Physical data</b>								
Indoor air flow(Hi/Med/Lo)	m³/h	810/700/580	1200/1050/900	1350/1200/1050	1700/1500/1200	1900/1600/1300	1900/1600/1300	
Indoor noise level(Hi/Med/Lo)	dB(A)	48/45/43	48/46/44	48/46/44	48/46/44	52/48/45	52/48/45	
Dimension(W×H×D)	Body(mm)	840×230×840	840×230×840	840×285×840	840×285×840	840×285×840	840×285×840	
	Panel(mm)	950X40X950	950X40X950	950X40X950	950X40X950	950X40X950	950X40X950	
Packing dimension(W×H×D)	Body(mm)	920×265×920	920×265×920	920×265×920	920×310×920	920×310×920	920×310×920	
	Panel(mm)	1030X100X1030	1030X100X1030	1030X100X1030	1030X100X1030	1030X100X1030	1030X100X1030	
Net/Gross weight	Body(kg)	24/29	23.5/29	24/29	28/33.5	27/33	30.5/36	
	Panel(kg)	6.5/9.5	6.5/9.5	6.5/9.5	6.5/9.5	6.5/9.5	6.5/9.5	
Refrigerant type		R22	R22	R22	R22	R22	R22	
<b>Piping data</b>								
Liquid side/Gas side	mm	Φ6.35/Φ12.7	Φ9.52/Φ15.88	Φ9.52/Φ19.05	Φ9.52/ Φ19.05	Φ9.52/Φ19.05	Φ9.52/Φ19.05	
Drainag pipe	mm	DN25	DN25	DN25	DN25	DN25	DN25	
Application area	m²	20~35	28~50	28~50	40~70	55~95	60~105	
Stuffing quantity(Set)	40' HQ	150	90	90	60	60	60	

## R22 Cooling Only

Indoor unit		ICR-18C	ICR-24C	ICR-30C	ICR-36C	ICR-48C	ICR-60C	
Power supply	V/Ph/Hz	220~240/1/50	220~240/1/50	220~240/1/50	220~240/1/50	220~240/1/50	220~240/1/50	
<b>Capacity</b>								
Cooling	Capacity	Btu/h	18000	24000	30000	36000	48000	60000
		KW	5.3	7.1	8.8	10.5	14	16
	Input	W	100	150	200	160	180	180
	Rated current	A	0.5	0.7	1	0.8	0.8	0.8
	EER	W/W	2.82	2.86	2.62	2.65	2.59	2.72
<b>Physical data</b>								
Indoor air flow(Hi/Med/Lo)	m³/h	810/700/580	1200/1050/900	1350/1200/1050	1700/1500/1200	1900/1600/1300	1900/1600/1300	
Indoor noise level(Hi/Med/Lo)	dB(A)	48/45/43	48/46/44	48/46/44	48/46/44	52/48/45	52/48/45	
Dimension(W×H×D)	Body(mm)	840×230×840	840×230×840	840×285×840	840×285×840	840×285×840	840×285×840	
	Panel(mm)	950X40X950	950X40X950	950X40X950	950X40X950	950X40X950	950X40X950	
Packing dimension(W×H×D)	Body(mm)	920×265×920	920×265×920	920×265×920	920×310×920	920×310×920	920×310×920	
	Panel(mm)	1030X100X1030	1030X100X1030	1030X100X1030	1030X100X1030	1030X100X1030	1030X100X1030	
Net/Gross weight	Body(kg)	24/29	24/29	24/29	28/33.5	28/33.5	30.5/36	
	Panel(kg)	6.5/9.5	6.5/9.5	6.5/9.5	6.5/9.5	6.5/9.5	6.5/9.5	
Refrigerant type		R22	R22	R22	R22	R22	R22	
<b>Piping data</b>								
Liquid side/Gas side	mm	Φ6.35/Φ12.7	Φ9.52/Φ15.88	Φ9.52/Φ19.05	Φ9.52/ Φ19.05	Φ9.52/Φ19.05	Φ9.52/Φ19.05	
Drainag pipe	mm	DN25	DN25	DN25	DN25	DN25	DN25	
Application area	m²	20~35	28~50	28~50	40~70	55~95	60~105	
Stuffing quantity(Set)	40' HQ	90	90	90	60	60	60	



# Floor & Ceiling Unit



18K ~60K Btu/h

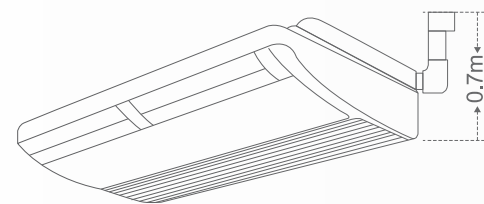
Controller		
Standard	Optional	
Wireless	Wireless	Wired

## Features

- 1 Flexible installation, ceiling suspended and floor standing.



- 4 Water pump is optional, the pumping head is up to 700mm.



- 2 Washable air filter.



- 5 Digital display is optional, in the middle or on the right side. It is more intuitive and simple, and error code can be shown in the display.



- 3 Auto-swing function, built-in two louver motor, vertical and horizontal air-flow adjustment.



- 6 New upper and lower buckle type wheel case, the upper wheel case can be removed alone, which is convenient adjust the wheel motor.



## Specification

### R410A Heat Pump

Indoor unit		IUA-18HR1	IUA-24HR1	IUA-36HR1	IUA-48HR1	IUA-60HR1	
Power supply	V/Ph/Hz	220-240/1/50	220-240/1/50	220-240/1/50	220-240/1/50	220-240/1/50	
<b>Capacity</b>							
Cooling	Capacity	Btu/h	18000	24000	36000	48000	60000
		KW	5.3	7.1	10.5	14	16
	Input	W	130	150	300	260	260
	Rated current	A	0.3	0.7	1.4	1.15	1.15
	EER	W/W	2.61	2.78	2.62	2.66	2.68
Heating	Capacity	Btu/h	19800	26000	39000	52000	60000
		KW	5.9	7.7	11.5	15.2	16.0
	Input	W	130	150	300	260	260
	Rated current	A	0.3	0.68	1.4	1.15	1.15
	COP	W/W	3.24	3.42	3.19	2.84	2.64
<b>Physical data</b>							
Indoor air flow(Hi/Med/Lo)	m³/h	790/670/540	1300/1050/900	1700/1300/1100	2300/1900/1500	2300/1900/1500	
Indoor noise level(Hi/Med/Lo)	dB(A)	52/48/44	48/43/39	52/48/44	57/52/48	57/52/48	
Dimension(W×H×D)	mm	880×635×203	1245×680×247	1245×680×247	1670×680×247	1670×680×247	
Packing dimension(W×H×D)	mm	970×725×300	1325×770×325	1325×770×325	1750×770×325	1750×770×325	
Net/Gross weight	kg	30/35	35/41	37/43	47/54	47/54	
Refrigerant type		R410A	R410A	R410A	R410A	R410A	
<b>Piping data</b>							
Liquid side/Gas side	mm	Φ6.35/Φ12.7	Φ9.52/Φ15.88	Φ9.52/Φ19.05	Φ9.52/Φ19.05	Φ9.52/Φ19.05	
Drainage pipe	mm	DN25	DN25	DN25	DN25	DN25	
Application area	m²	20-35	28-50	40-70	55-95	60-105	
Stuffing quantity(Set)	40' HQ	150	95	70	60	60	

### R410A Cooling Only

Indoor unit		IUA-18CR1	IUA-24CR1	IUA-36CR1	IUA-48CR1	IUA-60CR1	
Power supply	V/Ph/Hz	220-240/1/50	220-240/1/50	220-240/1/50	220-240/1/50	220-240/1/50	
<b>Capacity</b>							
Cooling	Capacity	Btu/h	18000	24000	36000	48000	60000
		KW	5.3	7.1	10.5	14	16
	Input	W	130	150	300	260	260
	Rated current	A	0.3	0.7	1.4	1.15	1.15
	EER	W/W	2.61	2.78	2.62	2.66	2.68
<b>Physical data</b>							
Indoor air flow(Hi/Med/Lo)	m³/h	790/670/540	1300/1050/900	1700/1300/1100	2300/1900/1500	2300/1900/1500	
Indoor noise level(Hi/Med/Lo)	dB(A)	52/48/44	48/43/39	52/48/44	57/52/48	57/52/48	
Dimension(W×H×D)	mm	880×635×203	1245×680×247	1245×680×247	1670×680×247	1670×680×247	
Packing dimension(W×H×D)	mm	970×725×301	1325×770×325	1325×770×325	1750×770×325	1750×770×325	
Net/Gross weight	kg	30/35	35/41	37/43	47/54	47/54	
Refrigerant type		R410A	R410A	R410A	R410A	R410A	
<b>Piping data</b>							
Liquid side/Gas side	mm	Φ6.35/Φ12.7	Φ9.52/Φ15.88	Φ9.52/Φ19.05	Φ9.52/Φ19.05	Φ9.52/Φ19.05	
Drainage pipe	mm	DN25	DN25	DN25	DN25	DN25	
Application area	m²	20-35	28-50	40-70	55-95	60-105	
Stuffing quantity(Set)	40' HQ	150	95	70	60	60	

# Low ESP Short Ducted Unit

## R22 Heat Pump

Indoor unit			IUA-18H	IUA-24H	IUA-30H	IUA-36H	IUA-48H	IUA-60H
Power supply	V/Ph/Hz		220~240/1/50	220~240/1/50	220~240/1/50	220~240/1/50	220~240/1/50	220~240/1/50
<b>Capacity</b>								
Cooling	Capacity	Btu/h	18000	24000	30000	36000	48000	60000
		KW	5.3	7.1	8.8	10.5	14	16
	Input	W	130	150	260	240	330	330
	Rated current	A	0.6	0.7	1.2	1.1	1.5	1.15
	EER	W/W	2.77	2.86	2.58	2.6	2.53	2.65
Heating	Capacity	Btu/h	20000	26000	32000	39000	52000	60000
		KW	5.8	7.8	9.3	11.5	15.4	16.6
	Input	W	130	150	260	240	330	330
	Rated current	A	0.6	0.7	1.2	1.1	1.5	1.15
	COP	W/W	3.31	3.41	2.92	2.95	2.79	2.68
<b>Physical data</b>								
Indoor air flow(Hi/Med/Lo)	m³/h		790/670/540	1300/1100/900	1450/1300/1050	1500/1300/1100	2300/1900/1600	2300/1900/1600
Indoor noise level(Hi/Med/Lo)	dB(A)		48/43/38	48/43/39	50/47/44	50/47/44	52/48/45	52/48/45
Dimension(W×H×D)	mm		880×635×203	1245×680×235	1245×680×244	1245×680×244	1670×680×244	1670×680×244
Packing dimension(W×H×D)	mm		970×711×301	1325×770×325	1325×770×325	1325×770×325	1750×770×330	1750×770×330
Net/Gross weight	Kg		30/32	35/41	35/41	37/43	47/54	47/54
Refrigerant type			R22	R22	R22	R22	R22	R22
<b>Piping data</b>								
Liquid side/Gas side	mm		Φ6.35/Φ12.7	Φ9.52/Φ15.88	Φ9.52/Φ15.88	Φ9.52/Φ19.05	Φ9.52/Φ19.05	Φ9.52/Φ19.05
Drainage pipe	mm		DN25	DN25	DN25	DN25	DN25	DN25
Application area	m²		20~35	28~50	35~60	40~70	55~95	60~105
Stuffing quantity(Set)	40' HQ		150	95	95	70	60	60

## R22 Cooling Only

Indoor unit			IUA-18C	IUA-24C	IUA-30C	IUA-36C	IUA-48C	IUA-60C
Power supply	V/Ph/Hz		220~240/1/50	220~240/1/50	220~240/1/50	220~240/1/50	220~240/1/50	220~240/1/50
<b>Capacity</b>								
Cooling	Capacity	Btu/h	18000	24000	30000	36000	48000	60000
		KW	5.3	7.1	8.8	10.5	14	16
	Input	W	130	150	260	240	330	330
	Rated current	A	0.6	0.7	1.2	1.1	1.5	1.15
	EER	W/W	2.77	2.86	2.58	2.6	2.53	2.65
<b>Physical data</b>								
Indoor air flow(Hi/Med/Lo)	m³/h		790/670/540	1300/1100/900	1450/1300/1050	1500/1300/1100	2300/1900/1600	2300/1900/1600
Indoor noise level(Hi/Med/Lo)	dB(A)		48/43/38	48/43/39	50/47/44	50/47/44	52/48/45	52/48/45
Dimension(W×H×D)	mm		880×635×203	1245×680×235	1245×680×244	1245×680×244	1670×680×244	1670×680×244
Packing dimension(W×H×D)	mm		970×711×301	1325×770×325	1325×770×325	1325×770×325	1750×770×330	1750×770×330
Net/Gross weight	Kg		30/32	35/41	35/41	37/43	47/54	47/54
Refrigerant type			R22	R22	R22	R22	R22	R22
<b>Piping data</b>								
Liquid side/Gas side	mm		Φ6.35/Φ12.7	Φ9.52/Φ15.88	Φ9.52/Φ15.88	Φ9.52/Φ19.05	Φ9.52/Φ19.05	Φ9.52/Φ19.05
Drainage pipe	mm		DN25	DN25	DN25	DN25	DN25	DN25
Application area	m²		20~35	28~50	35~60	40~70	55~95	60~105
Stuffing quantity(Set)	40' HQ		150	95	95	70	60	60

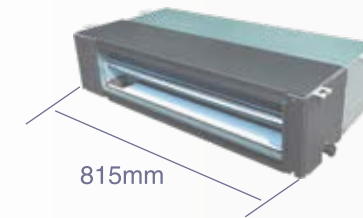


9K-24K Btu/h

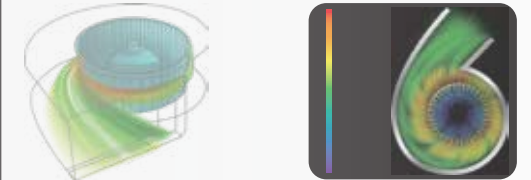
Controller		
Standard	Optional	
Wired	Wired	Wireless

## Features:

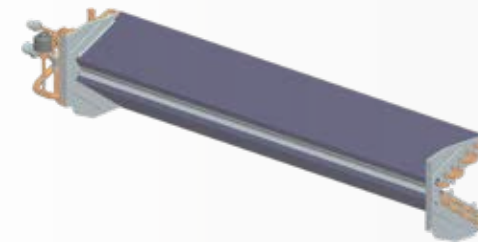
1 Short body, 815mm length, easy to install, low noise and light weight, suitable for hotel room.



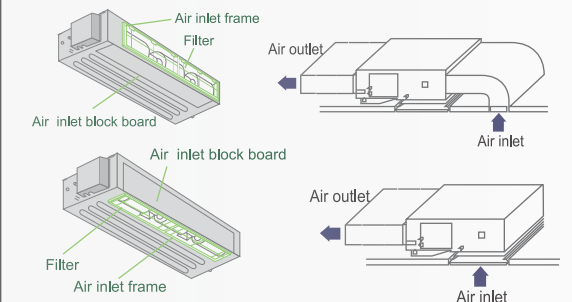
2 Adopting aviation centrifugal fan blade with special air tunnel design, as well as fan motor anti-vibration measure, benefit to increase air flow and decrease the noise.



3 V shaped evaporator design, increasing the heating exchanger efficiency.



4 Air return method is optional by actual installation, from rear or from bottom.



5 Three fan speed, meeting different requirement.



6 Water pump is optional, pump head is up to 750mm.

7 Multi protection and auto-restart function.

# Specification

## R410A Heat Pump

Indoor unit			IOU-18HR1	IOU-24HR1	IOU-36HR1	IOU-36HSR1	IOU-48HR1	IOU-60HR1
Power supply			220~240/1/50	220~240/1/50	220~240/1/50	220~240/1/50	220~240/1/50	220~240/1/50
<b>Capacity</b>								
Cooling	Capacity	Btu/h	18000	24000	36000	36000	48000	60000
		KW	5.3	7.1	10.5	10.5	14	16
	Input	W	250	250	300	300	340	340
	Rated current	A	1.1	1.1	1.4	1.4	1.6	1.6
	EER	W/W	2.47	2.68	2.62	2.62	2.56	2.65
Heating	Capacity	Btu/h	19800	26000	39000	39000	52000	60000
		KW	5.9	7.7	11.5	11.5	15.2	16.0
	Input	W	250	250	300	300	340	340
	Rated current	A	1.1	1.1	1.4	1.4	1.6	1.6
COP	W/W	3.04	3.28	3.18	3.18	2.79	2.61	
<b>Physical data</b>								
Indoor air flow(Hi/Med/Lo)	m³/h		900/750/640	1200/980/720	14000/1150/960	1900/1600/1300	2000/1700/1400	2000/1700/1400
Static Pressure	Pa		30~70	30~70	30~70	30~70	30~70	30~70
Indoor noise level(Hi/Med/Lo)	dB(A)		48/44/40	48/44/40	47/44/40	50/45/40	50/45/40	50/45/40
Dimension(W×H×D)	mm		1189×260×643	1189×260×643	1189×260×643	1425×260×643	1425×260×643	1425×260×643
Packing dimension(W×H×D)	mm		1255×325×720	1255×325×720	1255×325×720	1490×325×720	1490×325×720	1490×325×720
Net/Gross weight	kg		33/36	32/37	33/37	44/48	44/48	44/48
Refrigerant type			R410A	R410A	R410A	R410A	R410A	R410A
<b>Piping data</b>								
Liquid side/Gas side	mm		Φ6.35/Φ12.7	Φ9.52/Φ15.88	Φ9.52/Φ19.05	Φ9.52/Φ19.05	Φ9.52/Φ19.05	Φ9.52/Φ19.05
Drainag pipe	mm		DN25	DN25	DN25	DN25	DN25	DN25
Application area	m²		20~35	28~50	40~70	40~70	55~95	60~105
Stuffing quantity (Set)	40' HQ		100	100	100	70	60	60

## R410A Cooling Only

220~240/1/50

Indoor unit			ITB-18CR1-B	ITB-24CR1	ITB-36CR1	ITB-36CR1-B	ITB-48CR1	ITB-60CR1
Power supply			220~240/1/50	220~240/1/50	220~240/1/50	220~240/1/50	220~240/1/50	220~240/1/50
<b>Capacity</b>								
Cooling	Capacity	Btu/h	18000	24000	36000	36000	48000	60000
		KW	5.3	7.1	10.5	10.5	14	16
	Input	W	250	250	300	300	340	340
	Rated current	A	1.1	1.1	1.4	1.4	1.6	1.6
	EER	W/W	2.47	2.68	2.62	2.62	2.56	2.65
<b>Physical data</b>								
Indoor air flow(Hi/Med/Lo)	m³/h		900/750/640	1200/980/720	1400/1150/960	1900/1600/1300	2000/1700/1400	2000/1700/1400
Static Pressure	Pa		30~70	30~70	30~70	30~70	30~70	30~70
Indoor noise level(Hi/Med/Lo)	dB(A)		48/44/40	48/44/40	47/44/40	50/45/40	50/45/40	50/45/40
Dimension(W×H×D)	mm		1189×260×643	1189×260×643	1189×260×643	1425×260×643	1425×260×643	1425×260×643
Packing dimension(W×H×D)	mm		1255×325×720	1255×325×720	1255×325×720	1490×325×720	1490×325×720	1490×325×720
Net/Gross weight	kg		33/36	32/36	33/37	44/48	46/50	46/50
Refrigerant type			R410A	R410A	R410A	R410A	R410A	R410A
<b>Piping data</b>								
Liquid side/Gas side	mm		Φ6.35/Φ12.7	Φ9.52/Φ15.88	Φ9.52/Φ19.05	Φ9.52/Φ19.05	Φ9.52/Φ19.05	Φ9.52/Φ19.05
Drainag pipe	mm		DN25	DN25	DN25	DN25	DN25	DN25
Application area	m²		20~35	28~50	40~70	40~70	55~95	60~105
Stuffing quantity (Set)	40' HQ		100	100	100	70	60	60

## R22 Heat Pump

Indoor unit			ITB-24H	ITB-30H	ITB-36H	ITB-48H	ITB-60H
Power supply		V/Ph/Hz	220-240/1/50	220-240/1/50	220-240/1/50	220-240/1/50	220-240/1/50
<b>Capacity</b>							
Cooling	Capacity	Btu/h	24000	30000	36000	48000	60000
		KW	7.1	8.8	10.5	14	16
	Input	W	190	250	340	340	340
	Rated current	A	0.9	1.2	1.6	1.6	1.6
	EER	W/W	2.82	2.59	2.54	2.51	2.65
Heating	Capacity	Btu/h	26000	32000	39000	52000	60000
		KW	7.8	9.3	11.5	15.4	16.6
	Input	W	190	250	340	340	340
	Rated current	A	0.9	1.2	1.6	1.6	1.6
COP	W/W	3.35	2.93	2.87	2.82	2.61	
<b>Physical data</b>							
Indoor air flow(Hi/Med/Lo)	m³/h		1150/1000/820	1350/1050/950	1900/1600/1300	2000/1700/1400	2000/1700/1400
Static Pressure	Pa		30~70	30~70	30~70	30~70	30~70
Indoor noise level(Hi/Med/Lo)	dB(A)		48/44/40	50/45/40	50/45/40	50/45/40	50/45/40
Dimension(W×H×D)	mm		1190×260×643	1190×260×643	1425×260×643	1425×260×643	1425×260×643
Packing dimension(W×H×D)	mm		1255×325×720	1255×325×720	1490×325×720	1490×325×720	1490×325×720
Net/Gross weight	kg		32/36	32/36	44/48	46/50	46/50
Refrigerant type			R22	R22	R22	R22	R22
<b>Piping data</b>							
Liquid side/Gas side	mm		Φ9.52/Φ15.88	Φ9.52/Φ15.88	Φ9.52/Φ19.05	Φ9.52/Φ19.05	Φ9.52/Φ19.05
Drainag pipe	mm		DN25	DN25	DN25	DN25	DN25
Application area	m²		28~50	35~60	40~70	55~95	60~105
Stuffing quantity (Set)	40' HQ		100	100	70	60	60

## R22 Cooling Only

Indoor unit			ITB-24C	ITB-30C	ITB-36C	ITB-48C	ITB-60C
Power supply		V/Ph/Hz	220-240/1/50	220-240/1/50	220-240/1/50	220-240/1/50	220-240/1/50
<b>Capacity</b>							
Cooling	Capacity	Btu/h	24000	30000	36000	48000	60000
		KW	7.1	8.8	10.5	14	16
	Input	W	190	250	340	340	340
	Rated current	A	0.9	1.2	1.6	1.6	1.6
	EER	W/W	2.82	2.59	2.54	2.51	2.65
<b>Physical data</b>							
Indoor air flow(Hi/Med/Lo)	m³/h		1150/1000/820	1350/1050/950	1900/1600/1300	2000/1700/1400	2000/1700/1400
Static Pressure	Pa		30~70	30~70	30~70	30~70	30~70
Indoor noise level(Hi/Med/Lo)	dB(A)		48/44/40	50/45/40	50/45/40	50/45/40	50/45/40
Dimension(W×H×D)	mm		1190×260×643	1190×260×643	1425×260×643	1425×260×643	1425×260×643
Packing dimension(W×H×D)	mm		1255×325×720	1255×325×720	1490×325×720	1490×325×720	1490×325×720
Net/Gross weight	kg		32/36	32/36	44/48	46/50	46/50
Refrigerant type			R22	R22	R22	R22	R22
<b>Piping data</b>							
Liquid side/Gas side	mm		Φ9.52/Φ15.88	Φ9.52/Φ15.88	Φ9.52/Φ19.05	Φ9.52/Φ19.05	Φ9.52/Φ19.05
Drainag pipe	mm		DN25	DN25	DN25	DN25	DN25
Application area	m²		28~50	35~60	40~70	55~95	60~105
Stuffing quantity (Set)	40' HQ		100	100	70	60	60



# Specification

## R22 Cooling Only And Heat Pump

Indoor unit			ITA-9C	ITA-9H	ITA-12C	ITA-12H	ITA-18C	ITA-18H	ITA-24C	ITA-24H
Power supply	V/Ph/Hz		220-240/1/50	220-240/1/50	220-240/1/50	220-240/1/50	220-240/1/50	220-240/1/50	220-240/1/50	220-240/1/50
<b>Capacity</b>										
Cooling	Capacity	Btu/h	9000	9000	12000	12000	18000	18000	24000	24000
		KW	2.6	2.6	3.5	3.5	5.3	5.3	7.1	7.1
	Input	W	1010	1010	1380	1380	1850	1850	2460	2460
	Rated current	A	0.2	0.2	0.3	0.3	0.3	0.3	0.6	0.6
	EER	W/W	2.57	2.57	2.54	2.54	2.86	2.86	2.89	2.89
Heating	Capacity	Btu/h	/	10000	/	13000	/	20000	/	27000
		KW	/	2.9	/	3.8	/	5.7	/	7.911
	Input	W	/	940	/	1280	/	1700	/	2420
	Rated current	A	/	0.2	/	0.3	/	0.3	/	0.6
COP	W/W	/	3.04	/	3.01	/	3.43	/	3.27	
<b>Physical data</b>										
Indoor air flow(Hi)	m³/h		520	520	650	650	900	900	1100	1100
Static Pressure	Pa		30	30	30	30	30	30	30	30
Indoor noise level	dB(A)		26~32	26~32	29~34	29~34	32~38	32~38	35~41	35~41
Dimension(W×H×D)	mm		815X467X210	815X467X210	815X467X210	815X467X210	815X467X210	1015X467X210	1215X467X210	1215X467X210
Packing(W×H×D)	mm		910×510×240	910×510×240	910×510×240	910×510×240	1110×510×240	1110×510×240	1310×510×240	1310×510×240
Net/Gross weight	kg		17.5/20.5	17.5/20.5	17.5/20.5	17.5/20.5	21/25	21/25	27/30.5	27/30.5
Refriertant type			R22	R22	R22	R22	R22	R22	R22	R22
<b>Piping data</b>										
Liquide side/Gas side	mm		Φ6.35/Φ9.52	Φ6.35/Φ9.52	Φ6.35/Φ12.7	Φ6.35/Φ12.7	Φ6.35/Φ12.7	Φ6.35/Φ12.7	Φ9.52/Φ15.88	Φ9.52/Φ15.88
Drainage pipe	mm		DN25	DN25	DN25	DN25	DN25	DN25	DN25	DN25
Application area	m²		10~20	10~20	15~25	15~25	20~35	20~35	28~50	28~50
Stuffing quantity(Set)	40'HQ		170	170	150	150	150	150	130	130

## R410A Cooling Only And Heat Pump

Indoor unit			ITA-18HR1	ITA-18CR1	ITA-24HR1	ITA-24CR1
Power supply	V/Ph/Hz		220~240V/1Ph/50Hz	220~240V/1Ph/50Hz	220~240V/1Ph/50Hz	220~240V/1Ph/50Hz
<b>Capacity</b>						
Cooling	Capacity	Btu/h	18000	18000	24000	24000
		KW	5.3	5.3	7.1	7.1
	Input	W	1980	1980	2550	2550
	Rated current	A	0.34	0.34	0.7	0.7
	EER	W/W	2.66	2.66	2.76	2.76
Heating	Capacity	Btu/h	20000	/	26000	/
		KW	5.9	/	7.6	/
	Input	W	1710	/	2250	/
	Rated current	A	0.34	/	0.7	/
COP	W/W	3.43	/	3.39	/	
<b>Physical data</b>						
Indoor air flow(Hi)	m³/h		900	900	1100	1100
Static Pressure	Pa		0/30	0/30	0/30	0/30
Indoor noise level	dB(A)		32~38	32~38	35~41	35~41
Dimension(W×H×D)	mm		1015×210×467	1015×210×467	1215×210×467	1215×210×467
Packing(W×H×D)	mm		1110×240×510	1110×240×510	1310×240×510	1310×240×510
Net/Gross weight	kg		21/25	21/25	27/30.5	27/30.5
Refriertant type			R410A	R410A	R410A	R410A
<b>Piping data</b>						
Liquide side/Gas side	mm		Φ6.35/Φ12.7	Φ6.35/Φ12.7	Φ9.52/Φ15.88	Φ9.52/Φ15.88
Drainage pipe	mm		DN25	DN25	DN25	DN25
Application area	m²		20~35	20~35	28~50	28~50
Stuffing quantity(Set)	40'HQ		150	150	130	130

# Medium ESP Ducted Unit



18K-60K Btu/h

Controller		
Standard	Optional	
Wired	Wired	Wireless

## Features:

- Ultra-thin body design.

260mm  
Medium ESP Type
- Adopting aviation centrifugal fan blade with special air tunnel design, as well as fan motor anti-vibration measure, benefit to increase air flow and decrease the noise.
- Three fan speed, meeting different requirements.
- 30Pa ESP design for the medium static pressure duct type, duct connected installation meet for different room structure (Can be customized to 70Pa ESP).
- Filter is optional, it can be taken out easily for clean.
- Multi protection and auto-restart function.
- Body-side is E-box, convenient installation and maintenance.
- Air return method is optional by actual installation, from rear or from bottom.